

Core20PLUS5

**A focused approach to
tackling health inequalities**

National Health Inequalities Improvement Team

*Exceptional quality healthcare for all through equitable access, excellent
experience and optimal outcomes*

Contact: england.healthinequalities@nhs.net

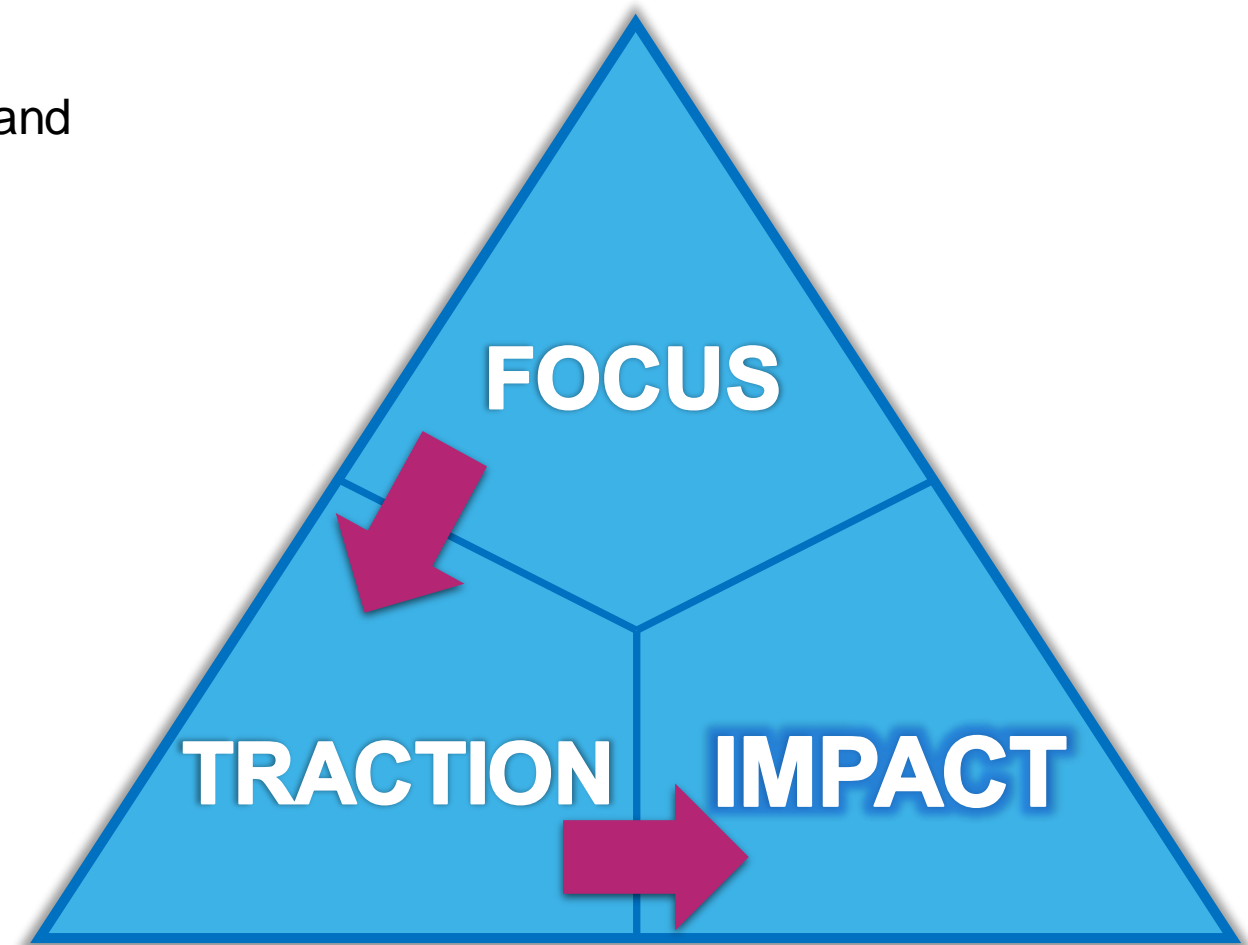
NHS England and NHS Improvement



Core20PLUS5: A Focused Approach

Core20PLUS5 offers ICSs a multi-year and **focused delivery approach** to enable prioritisation of energies and resources in the delivery of NHS LTP commitments to tackling health inequalities within the existing funding envelope.

- The Health Inequalities agenda is broad: we recognise we can't 'do it all' immediately
- In identifying the NHS contribution to the wider system effort to tackle health inequalities, we recognised the need for a **focused approach for tackling health inequalities**
- This **focused** approach enables us to gain **traction** thus demonstrating **impact** in reducing health inequalities



NHS England and NHS Improvement



1. **The 2019 NHS Long Term Plan (LTP)** set out key commitments to accelerate action to prevent ill health and tackle health inequalities.

2.26. To support local planning and ensure national programmes are focused on health inequality reduction, the NHS will set out specific, measurable goals for narrowing inequalities, including those relating to poverty, through the service improvements set out in this Long Term Plan.

NHS England, working with PHE and our partners in the voluntary and community sector and local government, will develop and publish a 'menu' of evidence-based interventions.

2. The **NHS 2021/22 Operational Planning Guidance** asked systems and providers to focus on five priority areas for tackling health inequalities, which have set the system-wide context for Core20 Plus 5

3. **COVID-19:** The disproportionate impact of the pandemic people from the most deprived areas, ethnic minority communities, and other vulnerable groups, has highlighted now more than ever the urgent need to tackle health inequalities.



Adopting Quality Improvement Methods in Core20PLUS5



Core20PLUS5 will be driven by QI methodology, including:

1) Strengths-based approach:

- a) Identify Exemplars
- b) Build from strength

2) Co-Production:

- a) Engaging Communities in design, implementation & evaluation.
- b) Genuinely listen with curiosity

3) Data-driven Improvement – Creating virtuous circles of data generating actionable insight which then drive interventions to bring about improvement thus generating intelligence about what works

NHS England and NHS Improvement



REDUCING HEALTHCARE INEQUALITIES

The Core20PLUS5 approach is designed to support Integrated Care Systems to drive targeted action in health inequalities improvement

CORE20
The most deprived **20%** of the national population as identified by the Index of Multiple Deprivation



PLUS
ICS-chosen population groups experiencing poorer-than-average health access, experience and/or outcomes, who may not be captured within the Core20 alone and would benefit from a tailored healthcare approach e.g. inclusion health groups



Target population

CORE20 PLUS 5

Key clinical areas of health inequalities



1 MATERNITY
ensuring continuity of care for **75%** of women from BAME communities and from the most deprived groups



2 SEVERE MENTAL ILLNESS (SMI)
ensuring annual health checks for **60%** of those living with SMI (bringing SMI in line with the success seen in Learning Disabilities)



3 CHRONIC RESPIRATORY DISEASE
a clear focus on Chronic Obstructive Pulmonary Disease (COPD), driving up uptake of Covid, Flu and Pneumonia vaccines to reduce infective exacerbations and emergency hospital admissions due to those exacerbations



4 EARLY CANCER DIAGNOSIS
75% of cases diagnosed at stage 1 or 2 by 2028

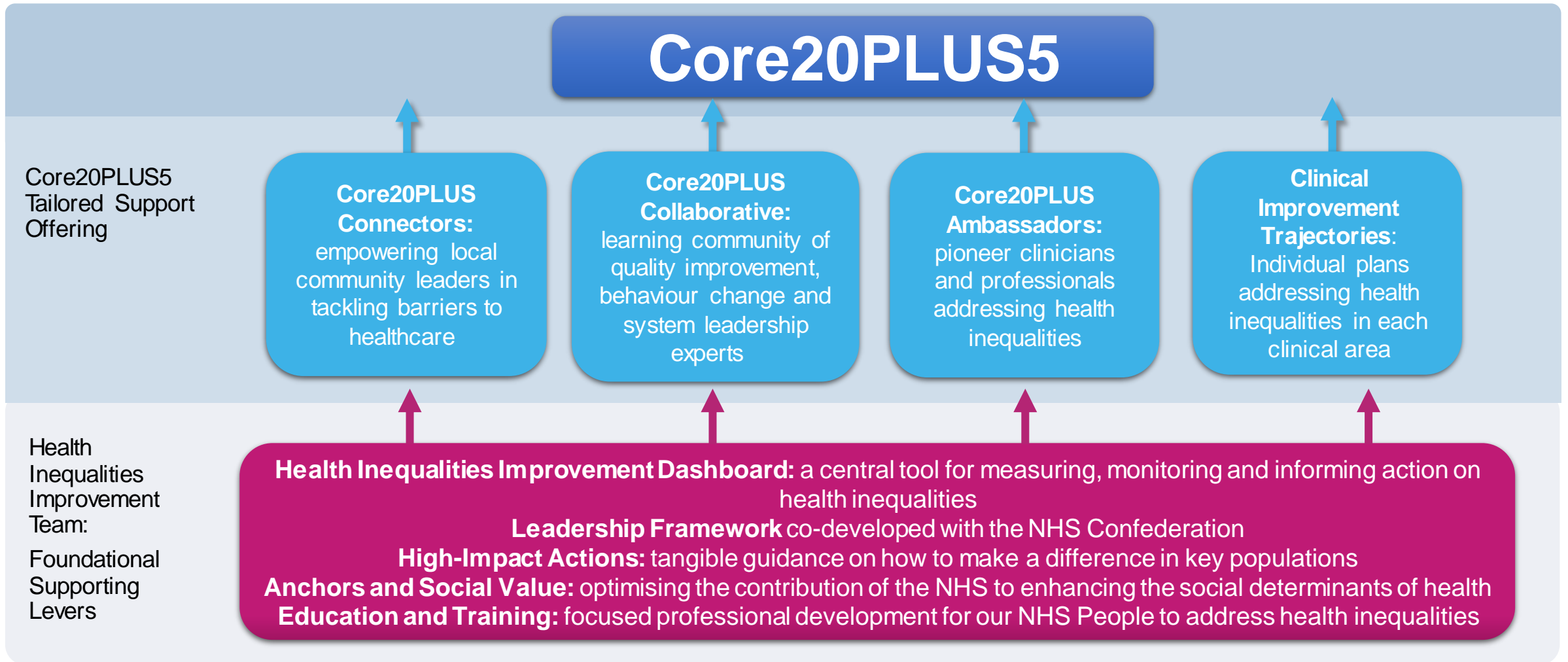


5 HYPERTENSION CASE-FINDING
to allow for interventions to optimise blood pressure and minimise the risk of myocardial infarction and stroke

The Core20PLUS5 Support Offering



*Please note: our support offering is in the progress of rapid development, with most elements up and running in early 2022



NHS England and NHS Improvement



Share your views on Core20PLUS5

We are seeking your views on NHS England and NHS Improvement's '**Core20PLUS5**' approach for reducing health inequalities.

The survey is aimed at:

- People in specific Health Inequalities roles working internally and externally of the NHS
- People in other roles with a particular interest in reducing health inequalities (NHS, Public Health, Local Gov etc)
- People from organisations that support, or have an expert understanding of, the communities at particular risk of health inequalities

Share your views at:

www.engage.england.nhs.uk/survey/core20plus5

Survey open 1-19 Nov 2021

NHS England and NHS Improvement

